
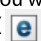


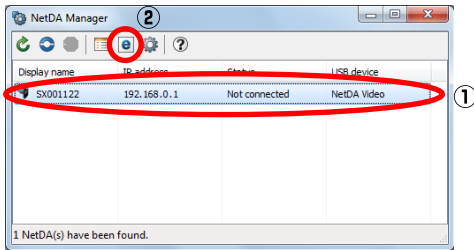
# Firmware Upload Procedure

This document describes how to update the firmware of SX-ND4050G.

The firmware can be upgraded using the Web Browser Interface of SX-ND4050G. Before you start, please make sure that both your PC and SX-ND4050G are connected to a wired network.

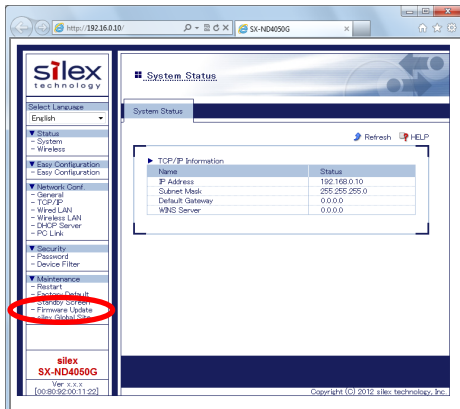
\* This document uses the screenshots captured from Windows 7. However, the procedure will be the same if you are using an OS other than Windows 7.

1. Click the taskbar icon (  ) to start NetDA Manager. When the main window is displayed, select SX-ND4050G you wish to upgrade the firmware for and click Web launch button (  ).



\* If NetDA Manager is not running, click **Start - All Programs - NetDA Manager - NetDA Manager**.

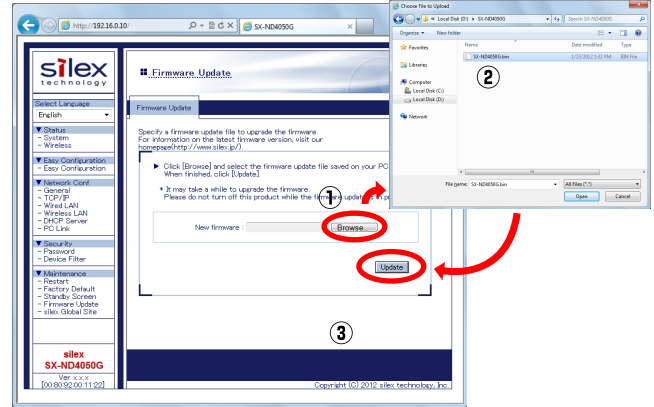
2. When the Web page of SX-ND4050G is displayed, click **Firmware Update** under **Maintenance**.



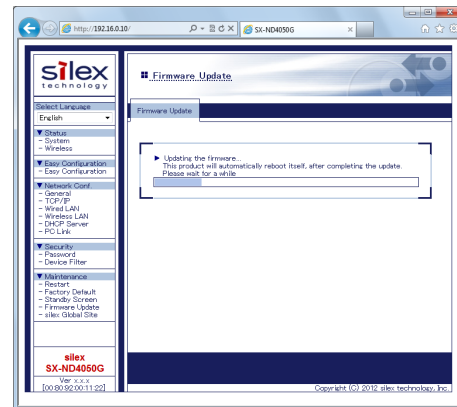
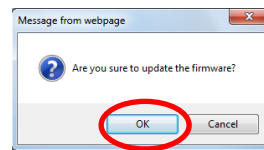
3. When the user authentication screen is displayed, enter "root" for User name and password that you have configured for SX-ND4050G for Password and click **OK**. (By factory default, no password is set to SX-ND4050G.)



4. When the user authentication is successfully completed, the Firmware Update page will be displayed. Click **Browse...** and select the file to be loaded to SX-ND4050G (SX-ND4050G.bin file). Check that the file name is displayed in New firmware field and click **Update**.



5. The update confirmation message is displayed. Click **OK** to begin the firmware upgrade. Please wait until the upgrade is complete.



\* Do not turn off SX-ND4050G or close your Web browser while the firmware upgrade is in process.

6. \* When the default screen of the Firmware Update page is displayed, the firmware upgrade is complete. In the bottom left of the Web page, check that the version information is changed.