

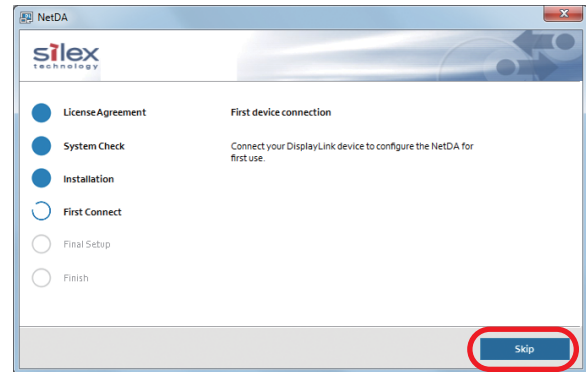
# Read this before installing the display driver

Please pay attention to the following when you install the display driver as well as connect to the NetDA.

## When you install the display driver for the first time

**Note 1** When the installation of display driver is started on the PC, the initial connection window appears as shown on the right. Click **Skip** then.

\* If the display driver has already been installed, this window does not appear.



**Note 2** When the installation of display driver is completed, restart the PC before connecting the NetDA.

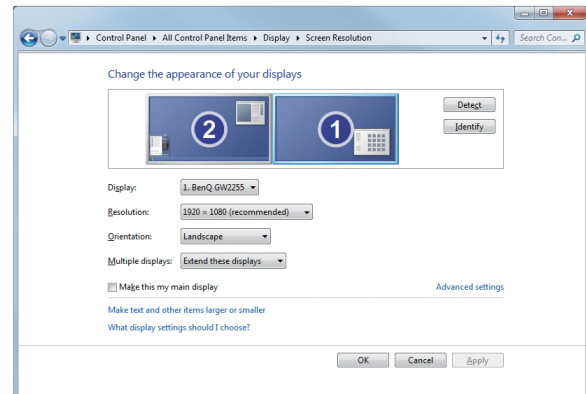
## When you connect the NetDA for the first time

The window below may appear when you connect to the NetDA from the utility for the first time after the display driver is installed to the PC.

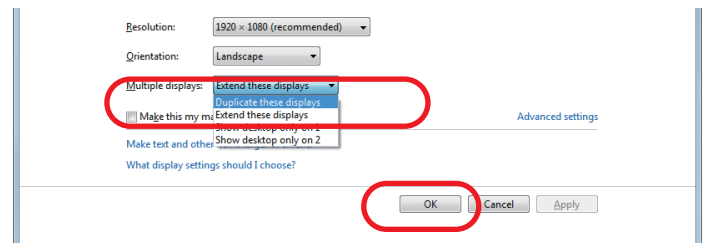
**Note 1** When this window does not appear after the NetDA is connected from the utility, restart the PC.

**Note 2** If this window appears when the NetDA is connected from the utility, the NetDA would be connected in extension mode. Change the setting at **Multiple displays** then.

\* If you want to use the NetDA in extension mode, this setting does not need to be changed. Click **OK** then.



Click the pull-down menu at **Multiple displays**, select **Duplicate these displays** and click **OK**.  
The NetDA has been switched to mirror mode.



If you have any issues, please contact our Customer Support Center.

US

Tel: +1-801-748-1199  
Email: support@silexamerica.com

Europe

Tel: +49-(0)2151-65009-0  
Email: support@silexeurope.com