

SX-DS-3000WN Setup Guide

English



Thank you very much for purchasing the wireless USB Device Server "SX-DS-3000WN".

This Setup Guide provides information on how to configure and use SX-DS-3000WN in your network environment. Please follow the instructions on **Step1- Step 4** to configure SX-DS-3000WN.

Before you begin, please carefully read the "Safety Instructions" and "About Wireless Interference" in the online manual included in the CD-ROM.

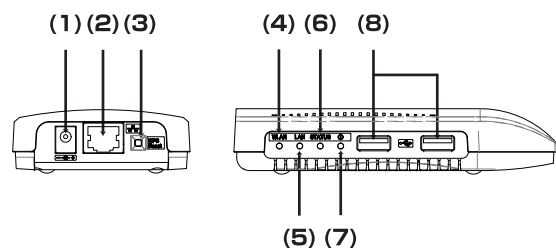


Package Contents

Please confirm the following items are bundled with SX-DS-3000WN:

- SX-DS-3000WN
- AC Adaptor
- Device Server Setup CD
(Including configuration software and online manual)
- Setup Guide (this document)
- SX Virtual Link User's Guide
- Warranty Booklet

Parts and Functions



- (1) Power Connector
- (2) Network Port
- (3) Push Switch
- (4) Wireless LED
- (5) LAN LED
- (6) STATUS LED
- (7) POWER LED
- (8) USB Port
- (9) Ethernet Address
- (10) Serial Number

User Registration

Please complete user registration after you finish the setup. User registration is required to provide you better technical support and services.

User Registration Website

<http://www.silex.jp/register/>

For user registration, a Serial Number is required. The Serial Number is the last 6-digits of the Ethernet Address(12-digits total) which can be found on the bottom of the unit.

Example: If the Ethernet Address is "00:80:92:00:11:22", the Serial Number will be "001122".

Before You Begin

About configuration methods

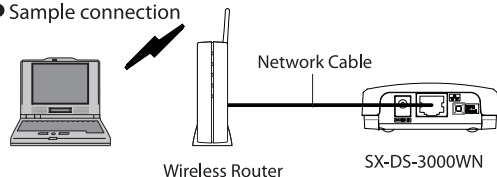
The following 3 configuration methods are supported.

This Setup Guide explains how to configure SX-DS-3000WN using a network cable. For other configuration methods, please refer to the online manual included in the CD-ROM.

- Configuration using a network cable (Recommended)

By connecting SX-DS-3000WN to your existing network using a network cable, you can configure the network settings from your computer. For this method, a network cable is required.

● Sample connection



- Configuration using the WPS feature of your wireless router

If your wireless router supports WPS (Wi-Fi Protected Setup), the network configuration can be done automatically by pressing the wireless connection button on your wireless router and the push switch on SX-DS-3000WN. For this configuration method, a wireless router supporting WPS is required.

- Configuration using a USB flash drive

By saving the configuration information to a USB flash drive and connecting it to SX-DS-3000WN, you can configure the network settings. To save the configuration information to the USB flash drive, please use the configuration utility contained in the CD-ROM. For this configuration method, a USB flash drive is required.

Step1 Check Your Wireless Settings

To use SX-DS-3000WN in your wireless network, SX-DS-3000WN must have the same settings as your wireless router (Access Point). Please check the wireless settings of your router and write them down in the table below:

* The information below is specific to your network and cannot be provided by silex technical support. For how to confirm each setting, please refer to the operating manual that came with your router or contact the manufacturer.

		Configuration Memo
Wireless Mode	This can be either "Infrastructure" mode or "Ad hoc" mode. Select "Infrastructure" mode when you wish to connect to your network via a wireless router. Select "Ad hoc" mode when you wish to make a direct connection to your wireless computer without using a wireless router. When using this mode, set the same channel as your wireless computer.	Infrastructure / Ad hoc (ch.)
SSID	The SSID is an ID that distinguishes a wireless LAN network from others. For wireless devices to communicate with each other on a wireless network, they must share the same SSID. (The SSID is also referred to as "ESSID".) Depending on your wireless router, it may have several SSIDs. If there are different SSIDs for a game console and computer, use the one for the computer.	SSID _____
Encryption Mode (Network Authentication)	No Encryption	Uses no encryption for wireless communication. (In this case, you do not have to check any of your settings beforehand.)
	WEP	If WEP encryption is used, wireless communication will be encrypted using the settings for "WEP Key 1-4" and "Key Index". Set the same "WEP Key Size(64bit/128bit)", "WEP Key" and "Key Index" as your wireless router.
	WPA / WPA2	Uses PSK for network authentication. The encryption key will be generated by communicating with the wireless router using a Pre-Shared key. WEP key setting is not used for this mode. Set the same "Pre-Shared key" and "Encryption Mode"(TKIP/AES) as your wireless router. The Pre-Shared key is also referred to as "Network Key" or "Password".
Network Authentication	WEP / WPA / WPA2 (Open / Shared)	_____
WEP Key or Pre-Shared Key	_____	_____
WEP key Size and Key Index or Encryption Mode	_____	_____

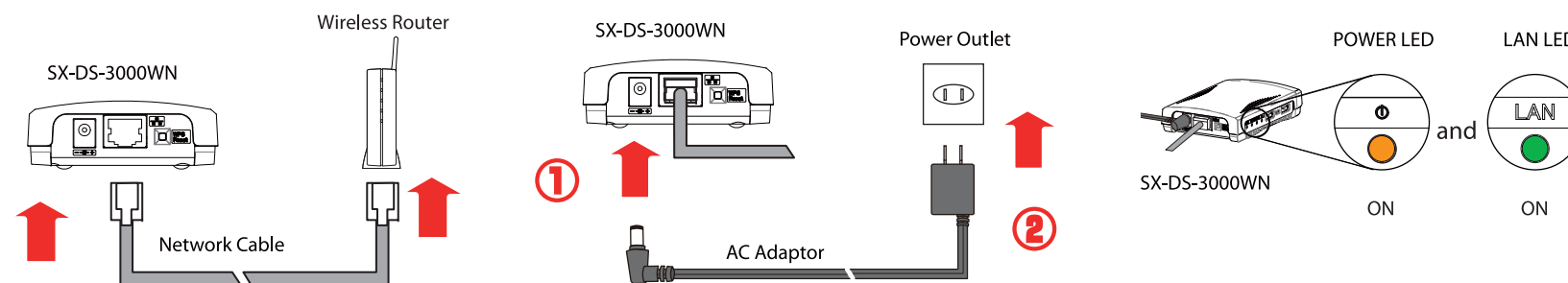
Step2 Power On

Connect SX-DS-3000WN to your network using a network cable.

1 Connect SX-DS-3000WN to your wireless router using a network cable.

2 Connect the AC adaptor to SX-DS-3000WN and the AC plug to the power outlet.

3 Confirm that both the POWER LED and the LAN LED turn on.



If the POWER LED is OFF

The AC adaptor is not plugged in properly. Start from **Step2-2** again.

If the LAN LED turns to Green or Orange

SX-DS-3000WN successfully connected to your network. Go on to **Step 3**.

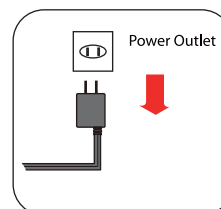
If the LAN LED is OFF

The network cable is not plugged in properly. Start from **Step2-1** again. If the network cable is plugged in properly, SX-DS-3000WN may contain incorrect network settings. In such a case, reset SX-DS-3000WN to factory defaults and start from **Step2-1** again. For details on how to reset SX-DS-3000WN to factory defaults, refer to "Factory Default Configuration".

Factory Default Configuration

If SX-DS-3000WN was previously configured for a different network or you wish to start configuration from factory defaults again, follow the instructions to the right.

1 Remove the AC plug from the power outlet.



2 Press and hold down the push switch on SX-DS-3000WN while inserting the AC plug back into the power outlet. Keep holding for a while and release the push switch when the LAN LED turns to Red.

