

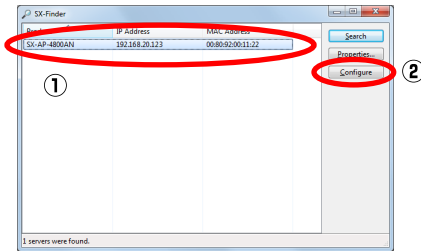
# Firmware Update Procedure

This document describes how to update the firmware of SX-AP-4800AN.

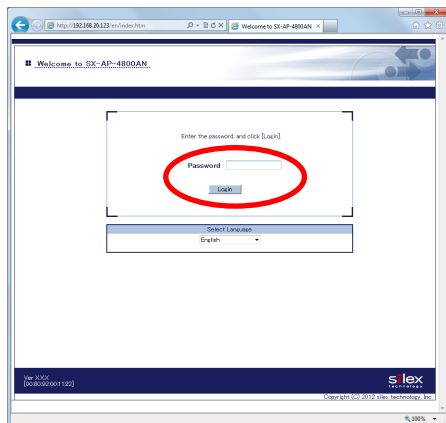
The firmware can be updated using the Web Browser Interface of SX-AP-4800AN that can be accessed using SX-Finder. Before you start, please make sure that both your PC and SX-AP-4800AN are connected in a wired network.

\* This document uses the screenshots captured from Windows 7. However, the procedure will be the same if you are using an OS other than Windows 7.

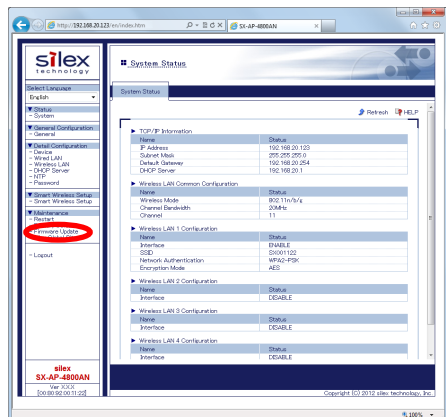
- 1 Start SX-Finder, select SX-AP-4800AN and click **Configure**.



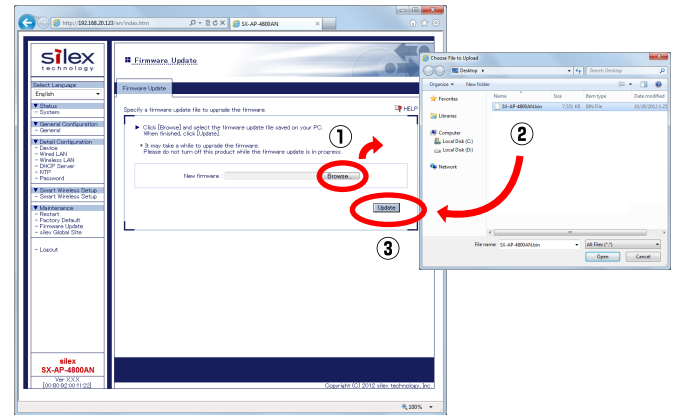
- 2 Your Web browser will run and the login menu for SX-AP-4800AN will be displayed. Enter the password and click **Login**. (By factory default, no password is set to SX-AP-4800AN.)



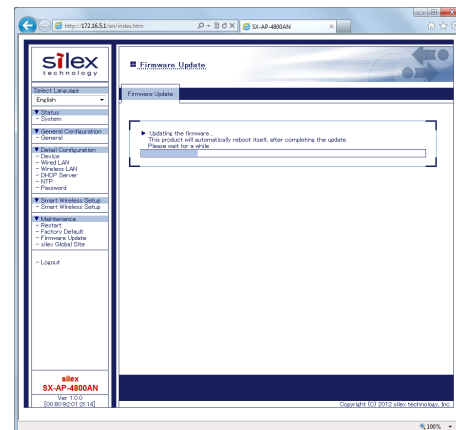
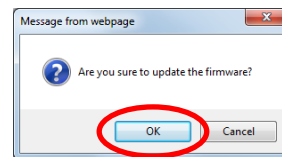
- 3 When the Web page of SX-AP-4800AN is displayed, click **Firmware Update** under **Maintenance**.



- 4 In the **Firmware Update** page, click **Browse...** and select the firmware file to be loaded to SX-AP-4800AN (SX-AP-4800AN.bin file). Check that the file name is displayed in New firmware field and click **Update**.



- 5 The update confirmation message is displayed. Click **OK** to begin the firmware update. Please wait until the update is complete.



\* Do not turn off SX-AP-4800AN or close your Web browser while the firmware update is in process.

- 6 When the login menu is displayed, the firmware update is complete. In the bottom left of the Web page, check that the version information is changed.