

C-6700WG Setup Guide

silex technology

WA05860XX

Thank you for purchasing silex technology's C-6700WG (this product). This is a USB 2.0 Hi-speed print server exclusively designed for the Canon printers. It supports IEEE802.11b/g and 10BASE-T/100BASE-TX. In addition to the printing function of a single function printer, the scanner, memory card reader and fax functions are available over the network if you use this product with a Canon MFP. This product supports 2 operation modes described below. Select one according to how you would like to use your Canon devices.

[Full feature (Device Server) Mode]
Allows you to use printers or scanners on your LAN as if they are connected directly to the USB interface of your computer. **(Supports Windows / Macintosh)**

[Print Server Mode] (Default)
Allows you to use printers on your LAN with the print client software, "CX Print", which supports the status monitor for Canon printer drivers. **(Supports Windows)**
- Macintosh is not supported.
- Printer calibration feature is not supported.

Safety instructions are noted in the Readme file on the CX User Software. Be sure to read them before using this product.

- Safety instructions regarding the radio waves
- Please note the following instructions:
 - Do not use this product near medical devices such as a heart pacemaker. The radio wave generated by this product may interfere with the operation of these devices and may threaten one's life.
 - Do not use this product near microwave ovens. The radio wave used by microwave ovens may cause interference to this product.

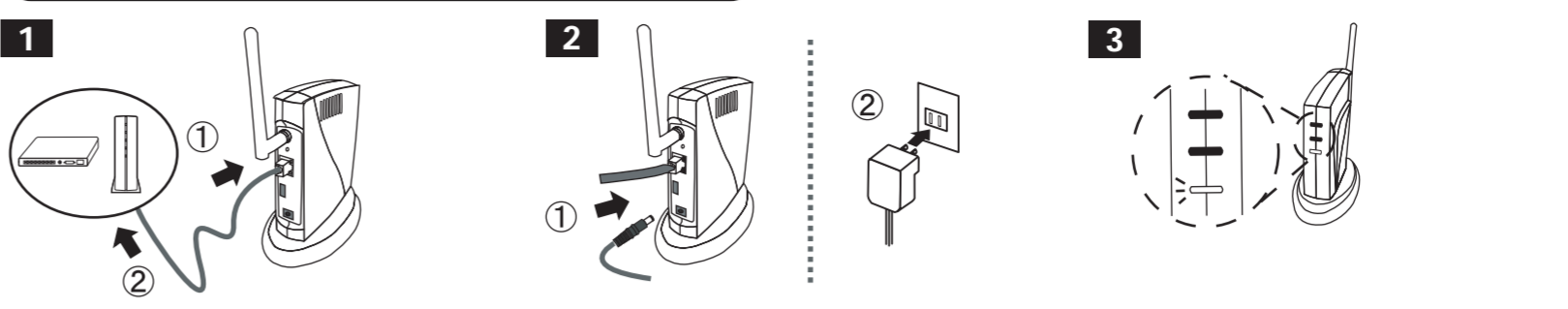
Introduction

This product has 6 methods of initial configuration as listed below:

- Configuration through a wired LAN
- Configuration through a wireless LAN
- Configuration using a USB memory
- Configuration using Windows Connect Now
- Configure Using a Push Switch
- Configure Using a PIN Code

This Setup Guide describes how to configure this product through a wired LAN. For other configuration methods, please refer to the separate sheet, "Easy Wireless Configuration Using WPS" or the online manual included in the CD-ROM.

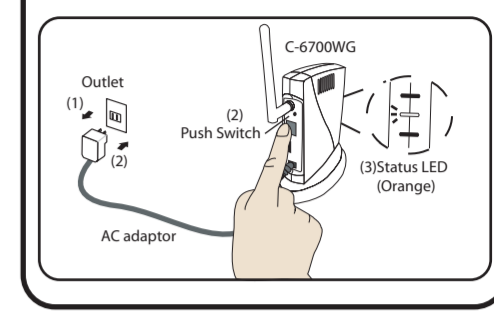
Step1 Connect this product to the network



- 1. Connect a network cable to this product. Connect the other end of the network cable to one of the following devices which has already been connected to the network.
 - Access point
 - Broadband router
 - Ethernet hub
- 2. Connect the power supply to this product, and then insert the AC Plug into the electric outlet. Always use the AC adaptor bundled with this product.
- 3. Verify the **Link LED (Green)** turns on and the **Wireless LED (Green)** turns off.

To reset to the factory default settings

1. Remove the AC plug from the electric outlet.
2. Push and hold the push switch while re-inserting the AC plug into the electric outlet. Continue holding.
3. The **Status LED (Orange)** will light when the factory default configuration settings have been restored. Release the push switch.



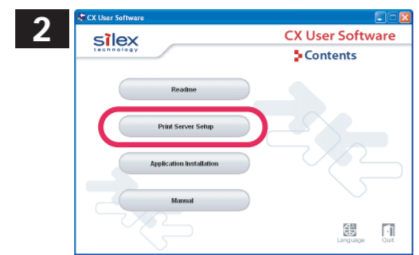
Step2 : Initial configuration of this product

<< for Windows >>

Step 2 explains the initial configuration process when this product is connected to the wired LAN via a network cable. You can use the C-6700WG through a wired or wireless LAN after the configuration is completed.

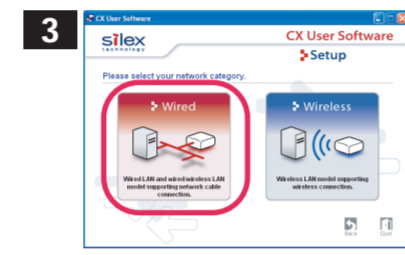
1 Please insert the **CX User Software** into your Windows PC.

* If the C-6700WG product has been used in another network, reset it to factory default prior to setup.
* Be sure to use the bundled AC adaptor.



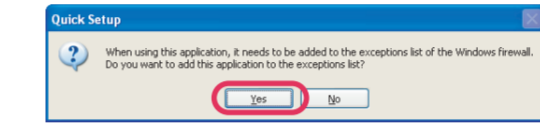
Please select **Print Server Setup** from the menu.

* If the screen does not appear automatically, open My Computer, select the CD-ROM drive and execute **Autorun.exe**.



Please select **Wired**.

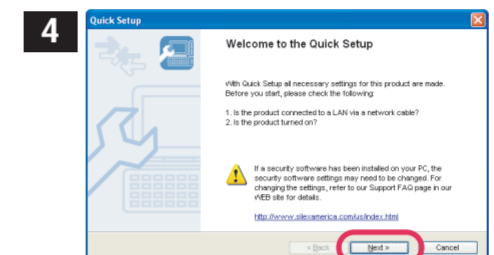
* Select the network connection type. Click **Wired** for a wired network. This Setup Guide explains how to configure with a wired network.



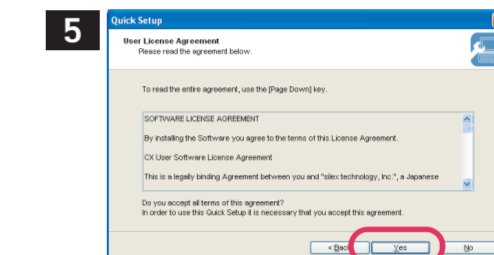
* When in a Windows XP environment (SP2 or higher), the message will be displayed. Select **Yes**.

* The User Account Control screen is displayed when configuration is performed on Windows Vista. Select **Continue**.

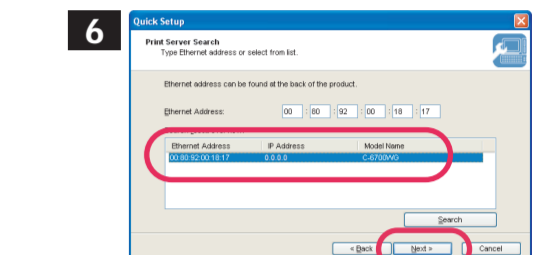
* The User Account Control screen is displayed when configuration is performed on Windows 7. Select **Yes**.



Click **Next**.

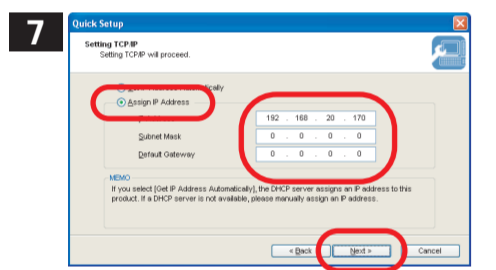


Read the agreement and click **Yes** to accept.



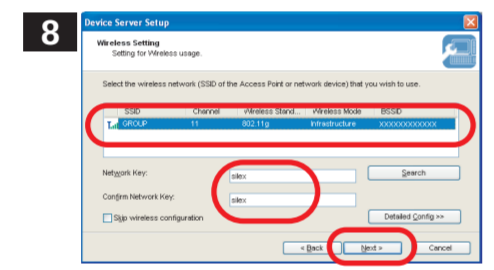
Select this product and click **Next**.

* When this product is not found in the list...
- Please confirm that the IP address of PC is configured correctly.
- If you use security or firewall software, including those embedded in Windows XP, please temporarily disable them.

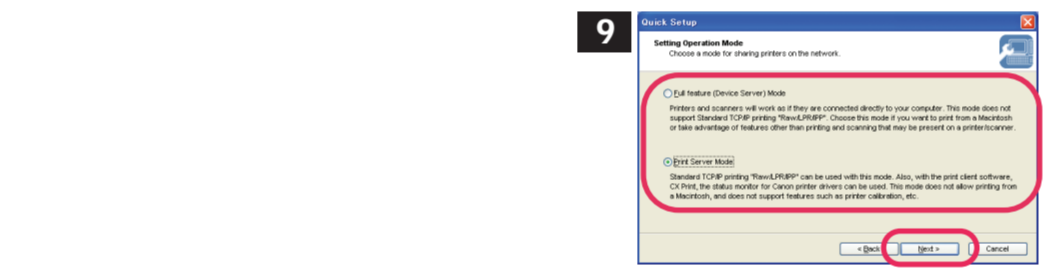


Enter an IP address for this product. Click **Assign IP Address**. Enter an IP address and click **Next**.

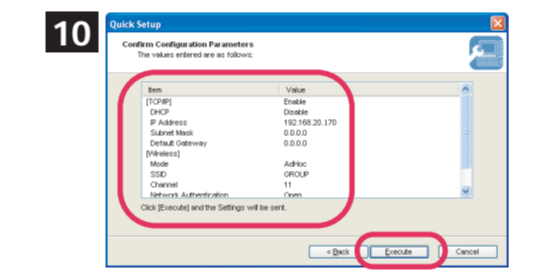
* When using DHCP/BOOTP server etc. please click Get IP Address Automatically.



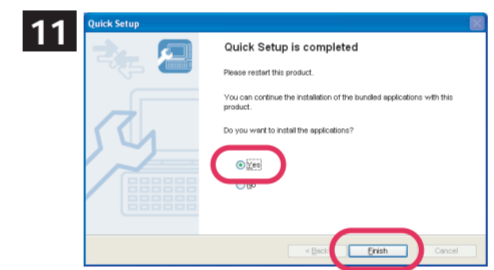
Enter the wireless parameters to use this product with a wireless LAN. When you will use C-6700WG in the wireless LAN, select the wireless network that you wish to use from the list, enter the wireless network key and click **Next**.



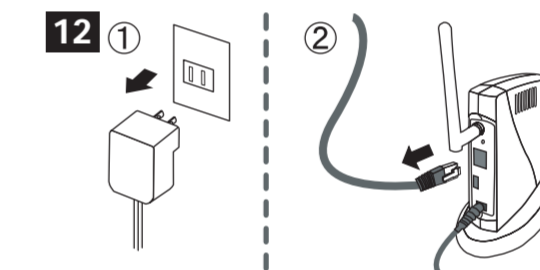
* Enter the wireless configuration information prepared in advance. If the wireless network that you wish to use is not shown in the list, click Detailed Config and configure each setting. For Detailed Config, please refer to the online manual. If you are going to use C-6700WG with a network cable instead of wirelessly, upon completing the configuration, check Skip wireless configuration and click **Next**.



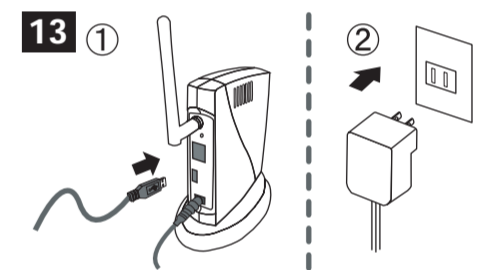
Please confirm the configuration parameters and click **Execute**.



Select **Yes** and click **Finish**.



To reflect the wireless configuration, disconnect the power plug from the outlet and unplug the network cable. Do not unplug the network cable if you plan to use the C-6700WG with a wired LAN in operation.



Connect the C-6700WG and the printer with a USB cable. Connect the power supply to the C-6700WG, and then insert the AC Plug into the electric outlet. The initial configuration of this product is complete. Go to Step 3-3.

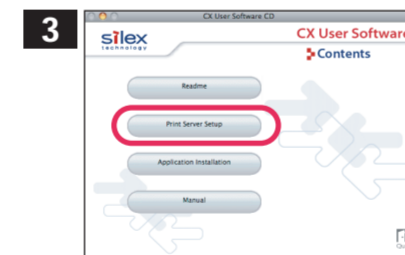
<< for Macintosh >>

Step 2 explains the initial configuration process when the C-6700WG is connected to the wired LAN via a network cable. You can use the C-6700WG through a wired or wireless LAN after the configuration is completed.

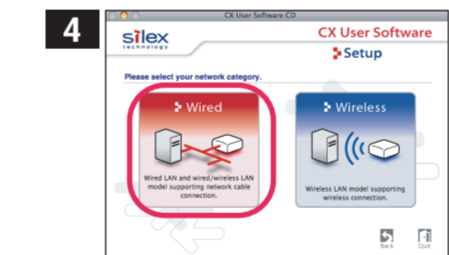
1 Please insert the **CX User Software** into your Macintosh PC.

* If the C-6700WG has been used in another network, reset it to factory default prior to setup.
* Be sure to use the bundled AC adaptor.

2 In a Macintosh environment, double click the CD-ROM icon and then double click **CXSetup**.

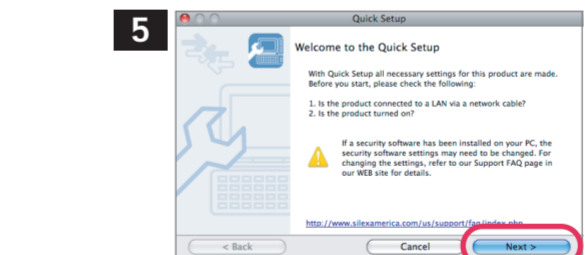


Please select **Print Server Setup** from the menu.



Please select **Wired**.

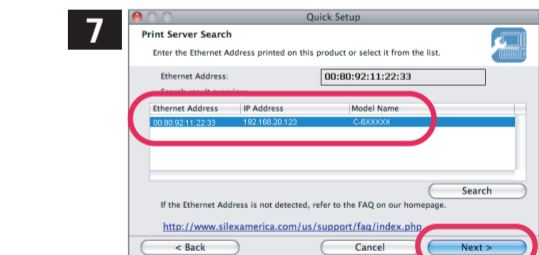
* Select the network connection type. Click **Wired** for a wired network. This Setup Guide explains how to configure with a wired network.



Click **Next**.

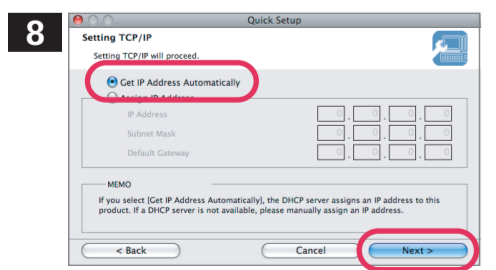


Read the agreement and click **Yes** to accept.



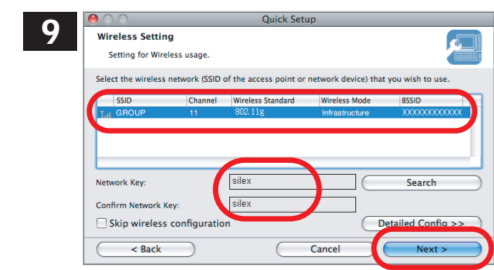
Select this product and click **Next**.

* If the C-6700WG is not found in the list...
- Please confirm that the IP address of PC is configured correctly. Please check that any firewall or other security software has been properly configured to allow discovery.

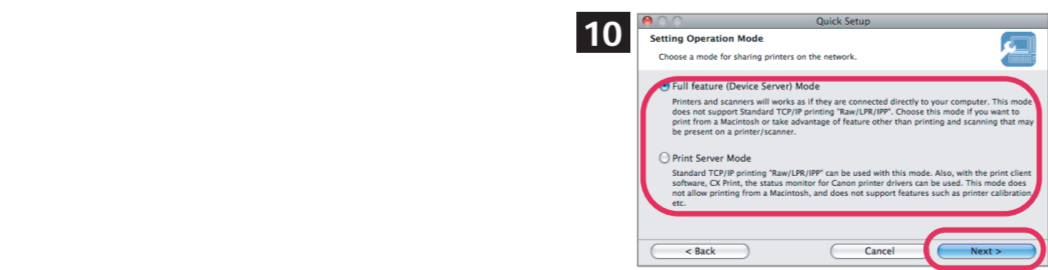


Click **Get IP Address Automatically** and then click **Next**.

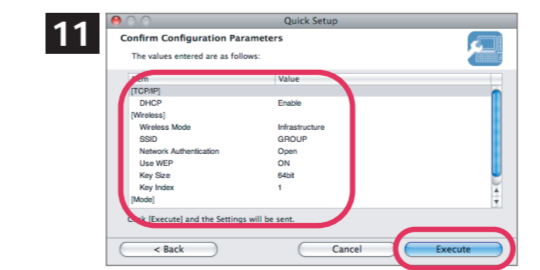
* When Get IP Address Automatically is selected, IP address is automatically obtained. When the window without the selection of Get IP Address Automatically is displayed, please enter the IP address (mandatory), subnet mask, and default gateway.



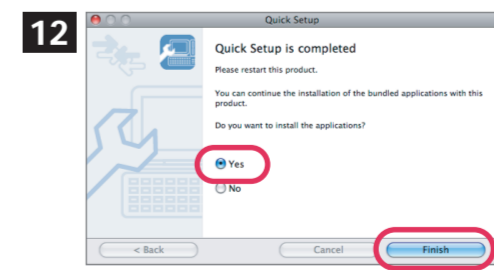
Enter the wireless parameters to use the C-6700WG with your wireless network. If you plan to use the C-6700WG on a wireless network, select the SSID or Network Name that you wish to use from the list, enter the wireless network key (either WEP Key, or WPA/WPA2-PSK) and click **Next**.



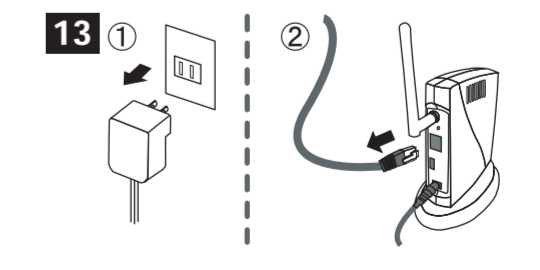
* Enter the wireless configuration information prepared in advance. If the wireless network that you wish to use is not shown in the list, click Detailed Config and configure each setting. For Detailed Config, please refer to the online manual (found on the CD or www.silexamerica.com/support). If you are going to use C-6700WG with a wired network cable instead of wirelessly, upon completing the configuration, check Skip wireless configuration and click **Next**.



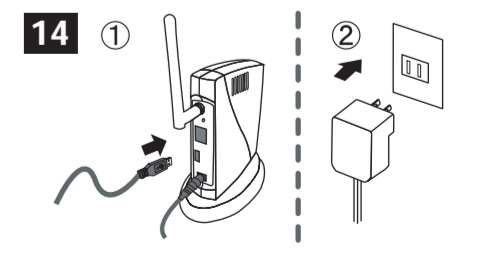
Please confirm the configuration parameters and click **Execute**.



Select **Yes** and click **Finish**.



To reflect the wireless configuration, disconnect the power plug from the outlet and unplug the network cable. Do not unplug the network cable when using the C-6700WG with a wired LAN in operation.



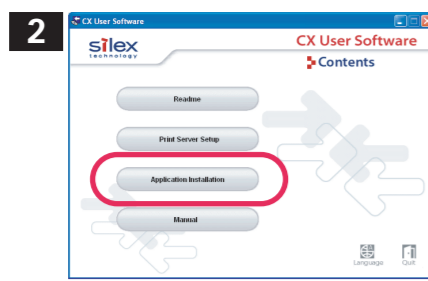
Connect the C-6700WG and the printer with a USB cable. Connect the power supply to the C-6700WG, and then insert the AC Plug into the electric outlet. The initial configuration of the C-6700WG is complete. Go to Step 3-4.

Step3 : Install the Application

<< for Windows >>

1 Please insert the **CX User Software** into your Windows PC.

* Install the printer driver for your specific printer or MFP prior to the configuration.

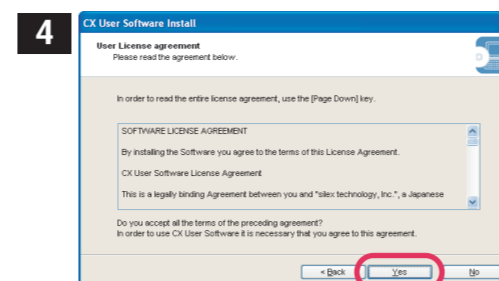


Click **Application Installation**.

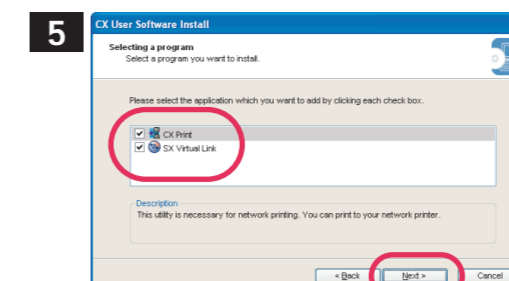
* If the screen does not appear automatically, open My Computer, select the CD-ROM drive and execute Autorun.exe.
 * The User Account Control screen is displayed if the configuration is performed on Windows Vista. Select **Continue**.
 * The User Account Control screen is displayed if the configuration is performed on Windows 7. Select **Yes**.



Click **Next**.

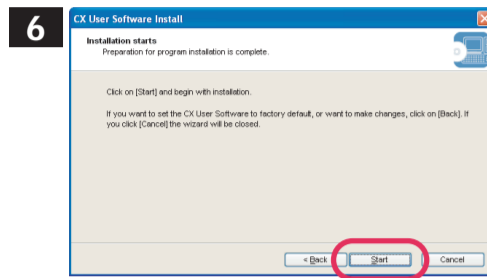


Read the agreement and click **Yes** to accept.

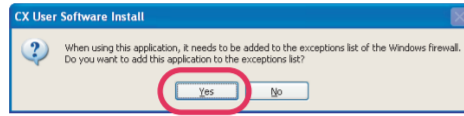


Select an application to install and click **Next**.

Operation mode selected at Step2-9.	Available Features	Necessary Applications
Print Server Mode	Print	CX Print
Full feature (Device Server) Mode	Scan / Fax / Storage	SX Virtual Link
	Print	

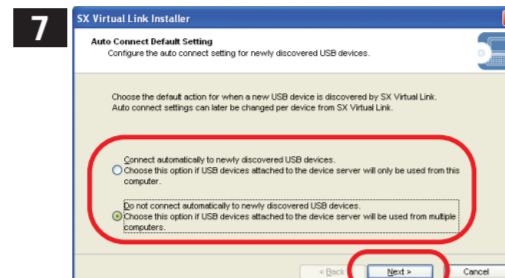


Click **Start**.



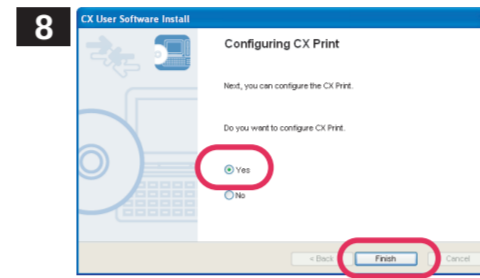
* When using Windows XP environment (SP2 or higher), this message will be displayed. Select **Yes**.

* A security screen is displayed when installing the application on a Windows Vista / Windows 7 PC.
 (1) Windows Security screen is displayed. Choose **Install**.
 (2) The screen to confirm the user adding the application to the Windows firewall exemptions list is displayed. Select **Yes**.



If the screen above is displayed, select the action to be taken when SX Virtual Link discovers a new MFP and click **Next**.

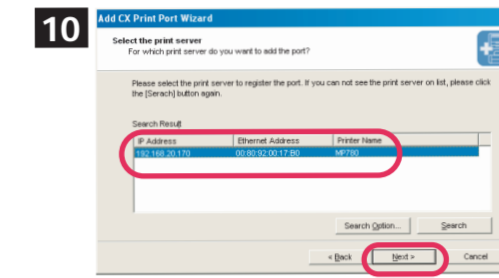
Note: If multiple computers are sharing the printer or MFP, it is recommended to choose "Do not connect automatically to newly discovered devices".



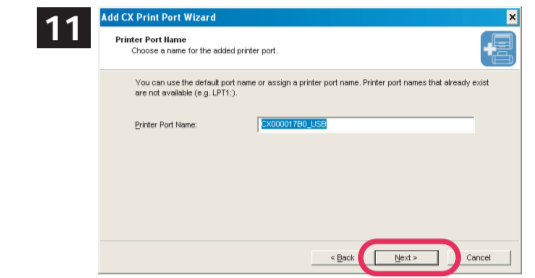
Select **Yes** and click **Finish**.



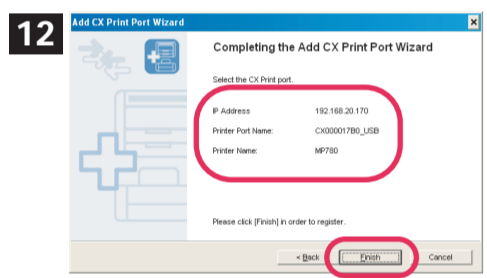
Click **Next**.



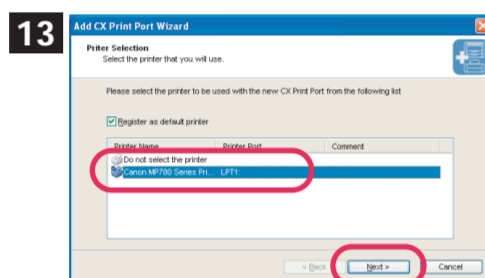
Select the C-6700WG from the menu and click **Next**.



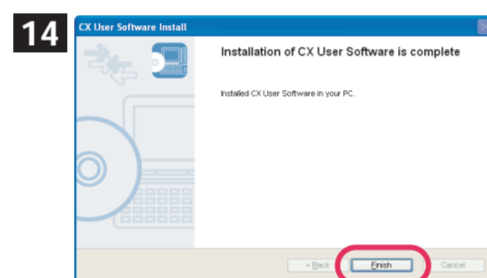
Click **Next**.



Please confirm the configuration parameters and click **Finish**.



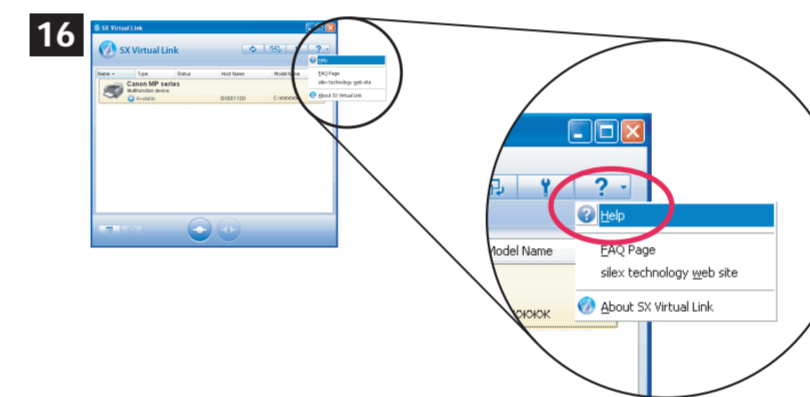
Select the printer and click **Next**.



Click **Finish**.



Click **Finish**. Now, the printer can be used in a network environment.



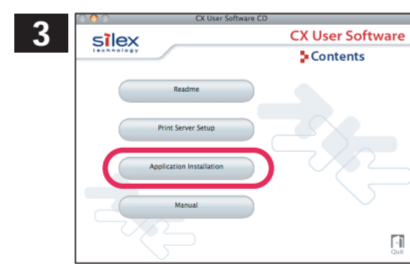
SX Virtual Link starts automatically if you have installed it. For how to use SX Virtual Link, access the Online Help via the **Help** button.

<< for Macintosh >>

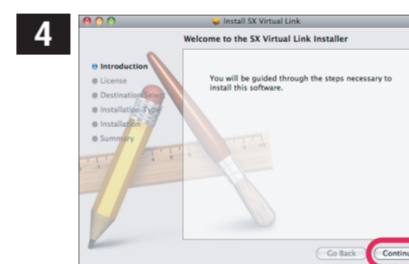
1 Please insert the **CX User Software** into your Macintosh PC.

* Install the printer driver for your specific printer or MFP prior to the configuration.

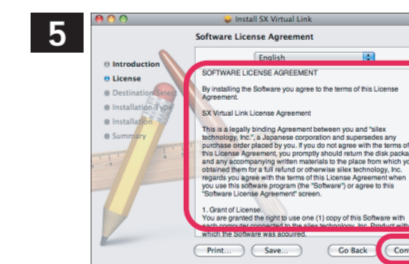
2 In a Macintosh environment, double click the CD-ROM icon and then double click **CXSetUp**.



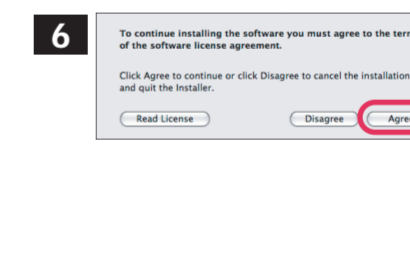
Click **Application Installation**.



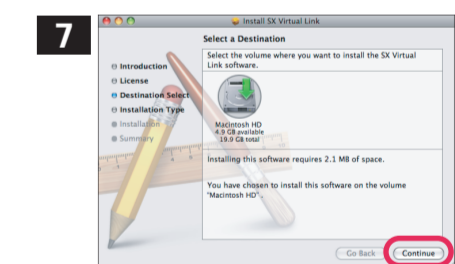
The SX Virtual Link Install screen is displayed. Click **Continue**.



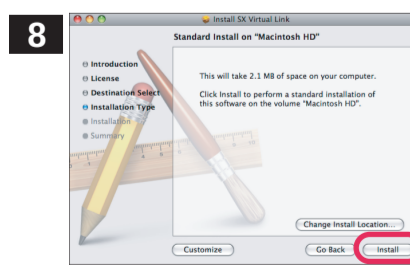
Read the SOFTWARE LICENSE AGREEMENT and click **Continue**.



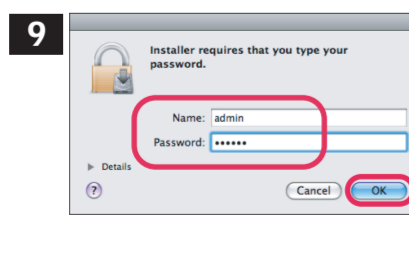
Click **Agree**.



Select a destination volume (In the case below, select Macintosh HD) and click **Continue**.

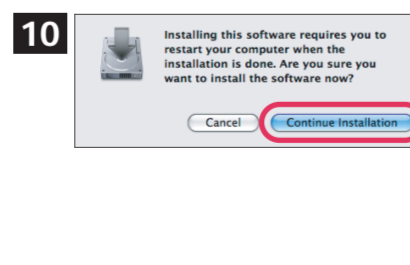


Click **Install**.

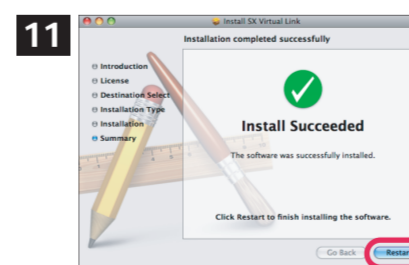


Administrator authentication screen is displayed. Enter **Name** and **Password**, then click **OK**.

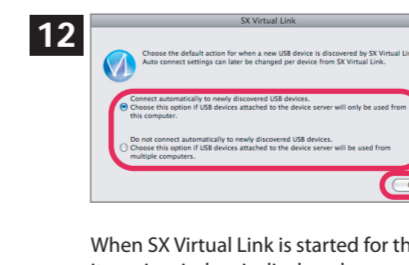
*Please enter the Name and Password of local administrator.



After confirmation message appears, close all other applications running on the system and click **Continue Installation**.



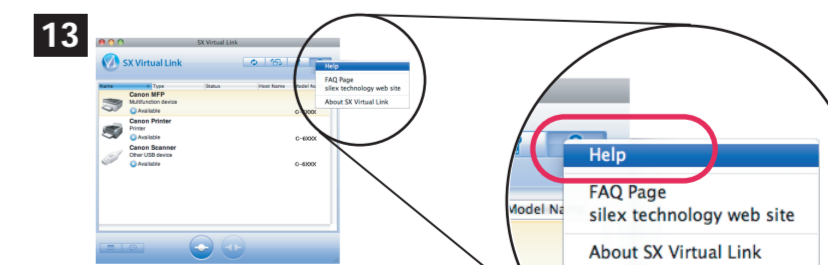
The installation is completed. Click **Restart** to restart the PC.



When SX Virtual Link is started for the first time and before its main window is displayed, a screen to select the default setting for auto connect is displayed. Select the setting appropriate for your environment and click **OK**. (This screen is displayed only for the first time and will not be displayed the next time SX Virtual Link is started.)

Note: If multiple computers are sharing the printer or MFP, it is recommended to choose "Do not connect automatically to newly discovered devices".

* This screen does not appear if SX Virtual Link has already been installed.



SX Virtual Link starts automatically if you have installed it. For how to use SX Virtual Link, access the Online Help via the **Help** button.

Customer Support

USA : SILEX TECHNOLOGY America, Inc.
 E-mail : support@silexamerica.com
 URL : http://www.silexamerica.com
 Phone : +1-866-765-8761